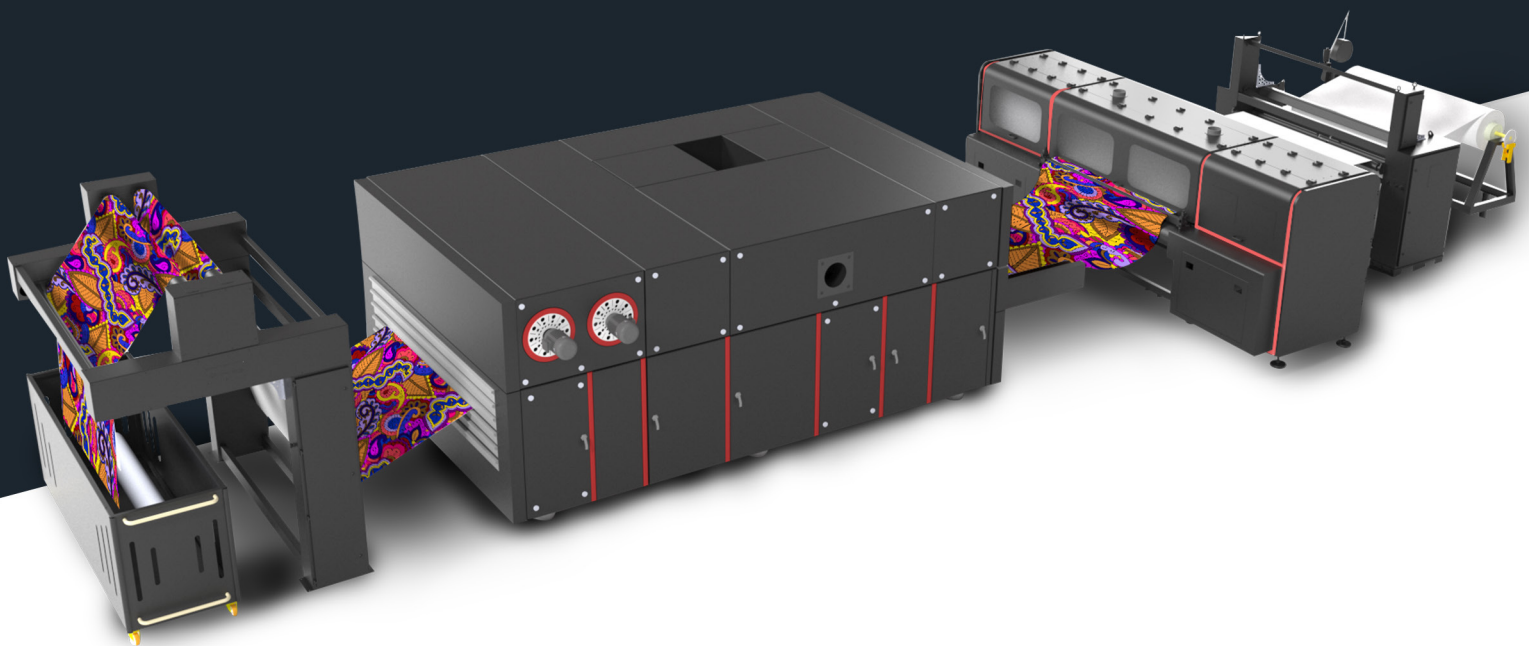




# NIRVANA BELT

*SPEED CONFIGURATIONS*

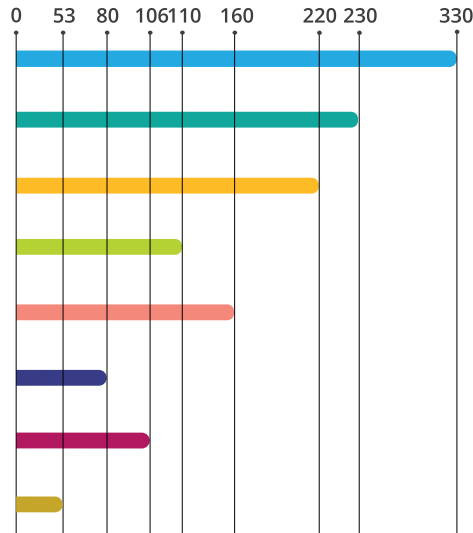


### NIRVANABELT 32 Printheads

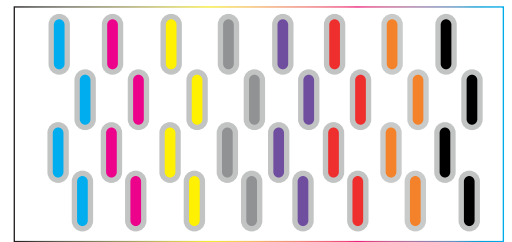
1.5 m Fabric

Speed in Linear meters / h

<b>Draft Mode</b> (1 PASS)	360 x 360 DPI
<b>Draft Mode</b> (2 PASS)	360 x 360 DPI
<b>Production Mode</b> (2 PASS)	360 x 720 DPI
<b>Production Mode</b> (4 PASS)	360 x 720 DPI
<b>Quality Mode</b> (3 PASS)	360 x 1080 DPI
<b>Quality Mode</b> (6 PASS)	360 x 1080 DPI
<b>High Quality Mode</b> (4 PASS)	720 x 720 DPI
<b>High Quality Mode</b> (8 PASS)	720 x 720 DPI



8 Colors / 32 Printheads

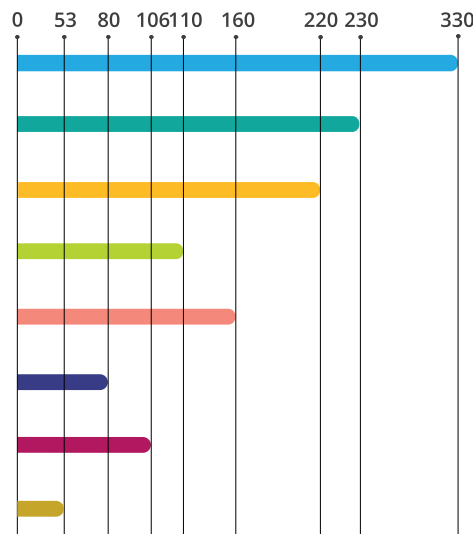


### NIRVANABELT 24 Printheads

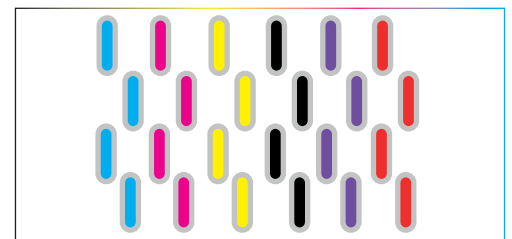
1.5 m Fabric

Speed in Linear meters / h

<b>Draft Mode</b> (1 PASS)	360 x 360 DPI
<b>Draft Mode</b> (2 PASS)	360 x 360 DPI
<b>Production Mode</b> (2 PASS)	360 x 720 DPI
<b>Production Mode</b> (4 PASS)	360 x 720 DPI
<b>Quality Mode</b> (3 PASS)	360 x 1080 DPI
<b>Quality Mode</b> (6 PASS)	360 x 1080 DPI
<b>High Quality Mode</b> (4 PASS)	720 x 720 DPI
<b>High Quality Mode</b> (8 PASS)	720 x 720 DPI



6 Colors / 24 Printheads

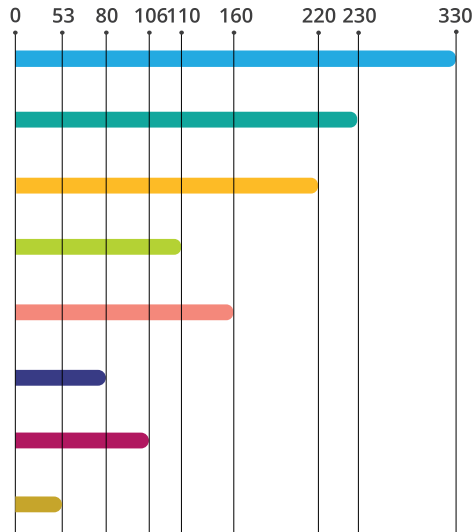


### NIRVANABELT 16 Printheads

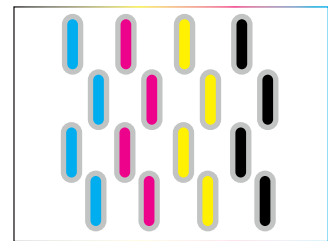
1.5 m Fabric

Speed in Linear meters / h

<b>Draft Mode</b> (1 PASS)	360 x 360 DPI
<b>Draft Mode</b> (2 PASS)	360 x 360 DPI
<b>Production Mode</b> (2 PASS)	360 x 720 DPI
<b>Production Mode</b> (4 PASS)	360 x 720 DPI
<b>Quality Mode</b> (3 PASS)	360 x 1080 DPI
<b>Quality Mode</b> (6 PASS)	360 x 1080 DPI
<b>High Quality Mode</b> (4 PASS)	720 x 720 DPI
<b>High Quality Mode</b> (8 PASS)	720 x 720 DPI



4 Colors / 16 Printheads

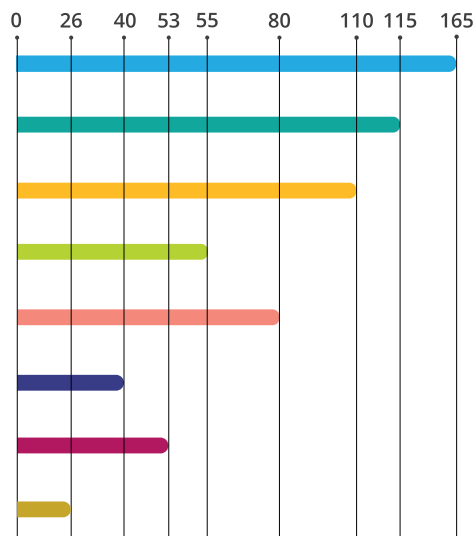


### NIRVANABELT 16 Printheads

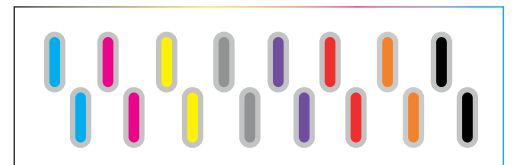
1.5 m Fabric

Speed in Linear meters / h

<b>Draft Mode</b> (1 PASS)	360 x 360 DPI
<b>Draft Mode</b> (2 PASS)	360 x 360 DPI
<b>Production Mode</b> (2 PASS)	360 x 720 DPI
<b>Production Mode</b> (4 PASS)	360 x 720 DPI
<b>Quality Mode</b> (3 PASS)	360 x 1080 DPI
<b>Quality Mode</b> (6 PASS)	360 x 1080 DPI
<b>High Quality Mode</b> (4 PASS)	720 x 720 DPI
<b>High Quality Mode</b> (8 PASS)	720 x 720 DPI



8 Colors / 16 Printheads

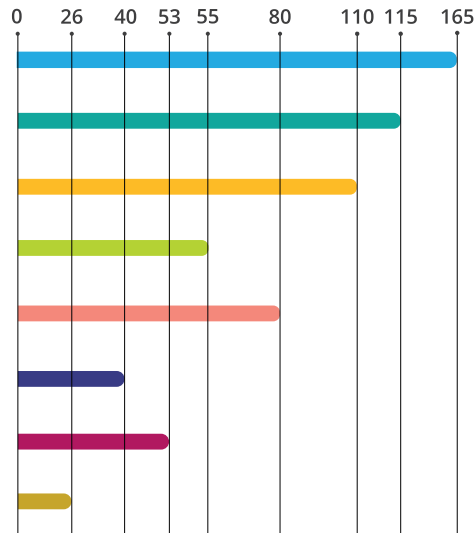


### NIRVANABELT 12 Printheads

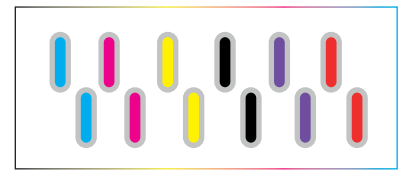
1.5 m Fabric

Speed in Linear meters / h

<b>Draft Mode</b> (1 PASS)	360 x 360 DPI
<b>Draft Mode</b> (2 PASS)	360 x 360 DPI
<b>Production Mode</b> (2 PASS)	360 x 720 DPI
<b>Production Mode</b> (4 PASS)	360 x 720 DPI
<b>Quality Mode</b> (3 PASS)	360 x 1080 DPI
<b>Quality Mode</b> (6 PASS)	360 x 1080 DPI
<b>High Quality Mode</b> (4 PASS)	720 x 720 DPI
<b>High Quality Mode</b> (8 PASS)	720 x 720 DPI



6 Colors / 12 Printheads

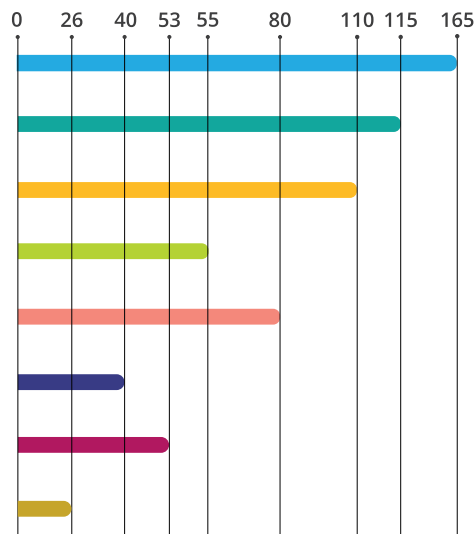


### NIRVANABELT 8 Printheads

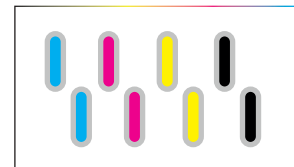
1.5 m Fabric

Speed in Linear meters / h

<b>Draft Mode</b> (1 PASS)	360 x 360 DPI
<b>Draft Mode</b> (2 PASS)	360 x 360 DPI
<b>Production Mode</b> (2 PASS)	360 x 720 DPI
<b>Production Mode</b> (4 PASS)	360 x 720 DPI
<b>Quality Mode</b> (3 PASS)	360 x 1080 DPI
<b>Quality Mode</b> (6 PASS)	360 x 1080 DPI
<b>High Quality Mode</b> (4 PASS)	720 x 720 DPI
<b>High Quality Mode</b> (8 PASS)	720 x 720 DPI



4 Colors / 8 Printheads

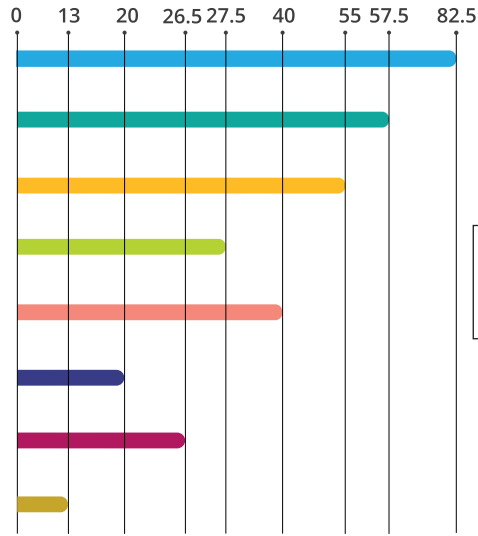


### NIRVANABELT 8 Printheads

#### 1.5 m Fabric

#### Speed in Linear meters / h

<b>Draft Mode</b> (1 PASS)	360 x 360 DPI
<b>Draft Mode</b> (2 PASS)	360 x 360 DPI
<b>Production Mode</b> (2 PASS)	360 x 720 DPI
<b>Production Mode</b> (4 PASS)	360 x 720 DPI
<b>Quality Mode</b> (3 PASS)	360 x 1080 DPI
<b>Quality Mode</b> (6 PASS)	360 x 1080 DPI
<b>High Quality Mode</b> (4 PASS)	720 x 720 DPI
<b>High Quality Mode</b> (8 PASS)	720 x 720 DPI



8 Colors / 8 Printheads



\*Above calculations are for reference only. Speeds may vary based on fabric, ink set and other external factors.